

# **New York State Electric & Gas Corporation**

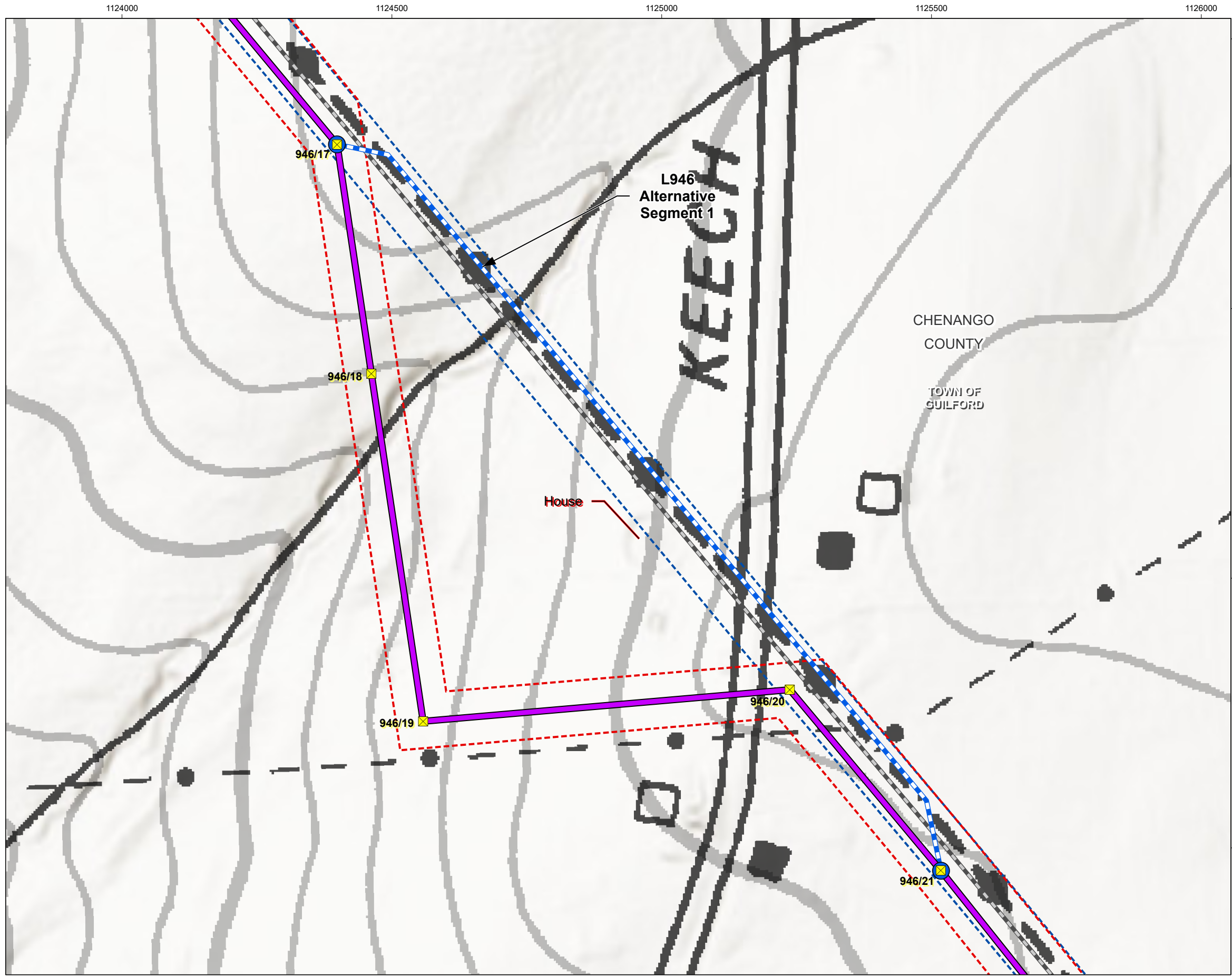
## **Jennison Transmission Solution Project**

### **Exhibit 3**

### **Alternatives**

### **Part 2 of 2**

U:\213415070\gis\_cad\gis\project1\_permitting\figure\Antiole\11\Exhibit\_3\213415070\_JTS\_Ex-3\_Alternatives.aprx Revised: 2024-11-14 By: abhattara

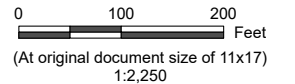


NYSEG  
An Avangrid company



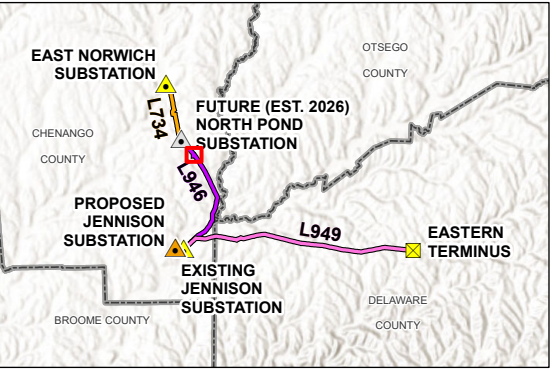
**Jennison Transmission Solution Project**

- Structure, Proposed
- Alternative Segment Endpoint
- Existing Line 946
- Proposed Line 946
- Line 946 Alternative
- Existing Right-of-Way
- Proposed Right-of-Way



**Notes**

1. Coordinate System: NAD 1983 StatePlane New York Central FIPS 3102 Feet
2. Data Sources: NYSEG Data, 2024; Esri North American Detailed Streets, 2012; USGS Elevation Contours, The National Map, 2024; NYS OITS GIS Program Office (GPO) Civil Boundaries, 2018
3. Background: NYSDOT 1:24,000-scale Raster Quadrangles  
Esri World Hillshade: [https://services.arcgis.com/arcgis/rest/services/Elevation/World\\_Hillshade/MapServer](https://services.arcgis.com/arcgis/rest/services/Elevation/World_Hillshade/MapServer)



**Project Location**  
Chenango, Delaware, & Otsego Counties, NY

Prepared by DG on 2024-06-24  
TR by AB on 2024-10-14  
IR by BS on 2024-10-25

**Client/Project**  
Jennison Transmission Solution Project  
NYSEG CLCPA Program

213415070 REVA

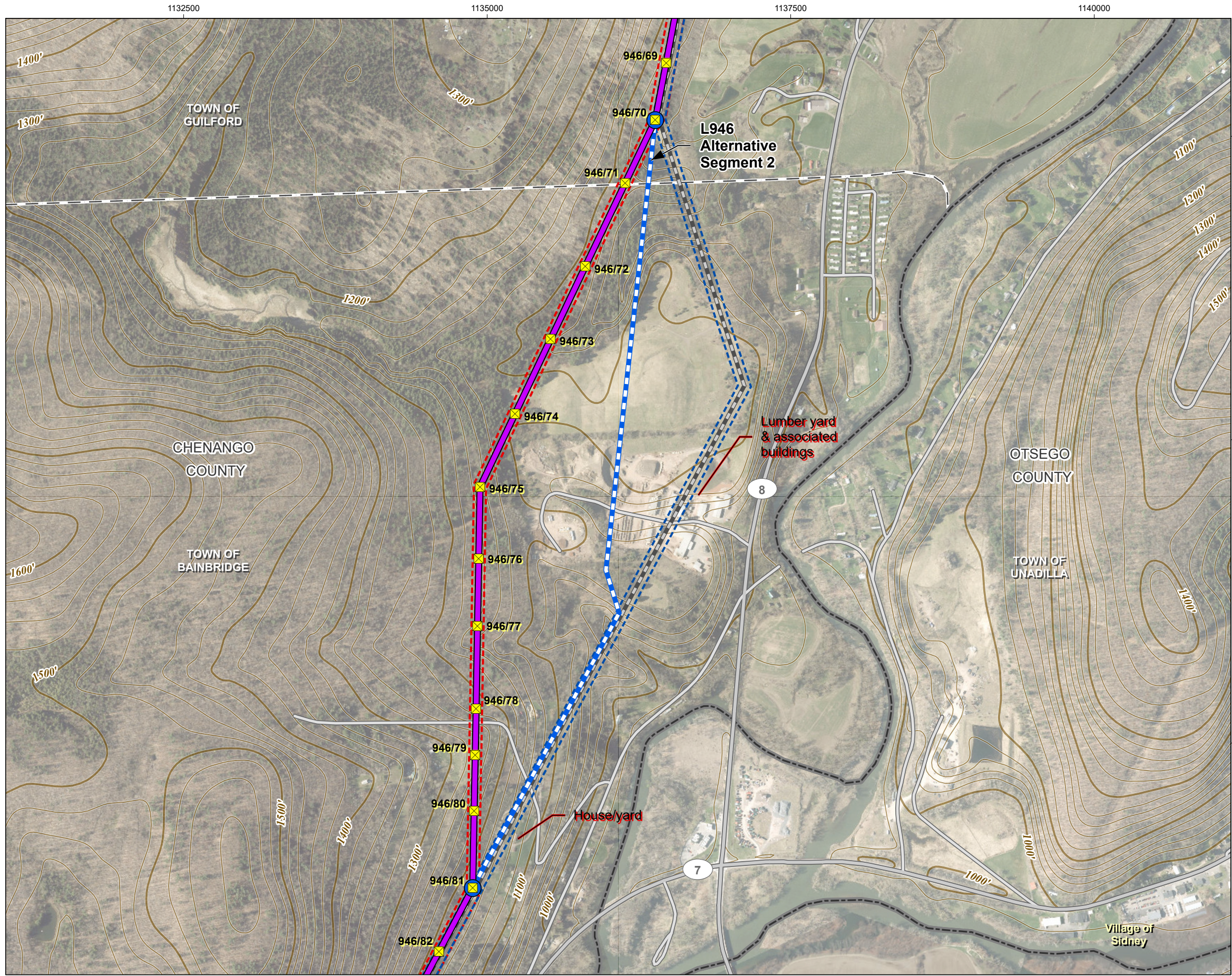
Figure No.

**3-4**

Title

**Line 946 Alternatives and Proposed Route  
Mapsheet 1 - Alternative Segment 1 (NYSDOT)**

U:\213415070\gis\_cad\gis\project1\_permitting\figure\Antioe\11\Exhibit\_3\213415070\_JTS\_Ex-3\_Alternatives.aprx Revised: 2024-11-14 By: abhattaral

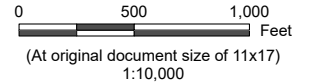


**NYSEG**  
An Avangrid company

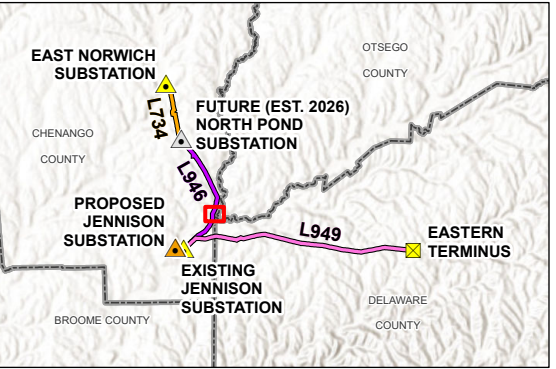


**Jennison Transmission Solution Project**

- Structure, Proposed
- Alternative Segment Endpoint
- Existing Line 946
- Proposed Line 946
- Line 946 Alternative
- Existing Right-of-Way
- Proposed Right-of-Way
- City or Town Boundary
- County Boundary
- Elevation Contour**
- 20-ft Contour
- 100-ft Contour
- Road or Highway**
- Secondary State or County Highway
- Local, Neighborhood, Rural or City Street



- Notes**
1. Coordinate System: NAD 1983 StatePlane New York Central FIPS 3102 Feet
  2. Data Sources: NYSEG Data, 2024; Esri North American Detailed Streets, 2012; USGS Elevation Contours, The National Map, 2024; NYS OITS GIS Program Office (GPO) Civil Boundaries, 2018
  3. Background: Esri World Imagery  
[https://services.arcgis.com/ArcGIS/rest/services/World\\_Imagery/MapServer](https://services.arcgis.com/ArcGIS/rest/services/World_Imagery/MapServer)



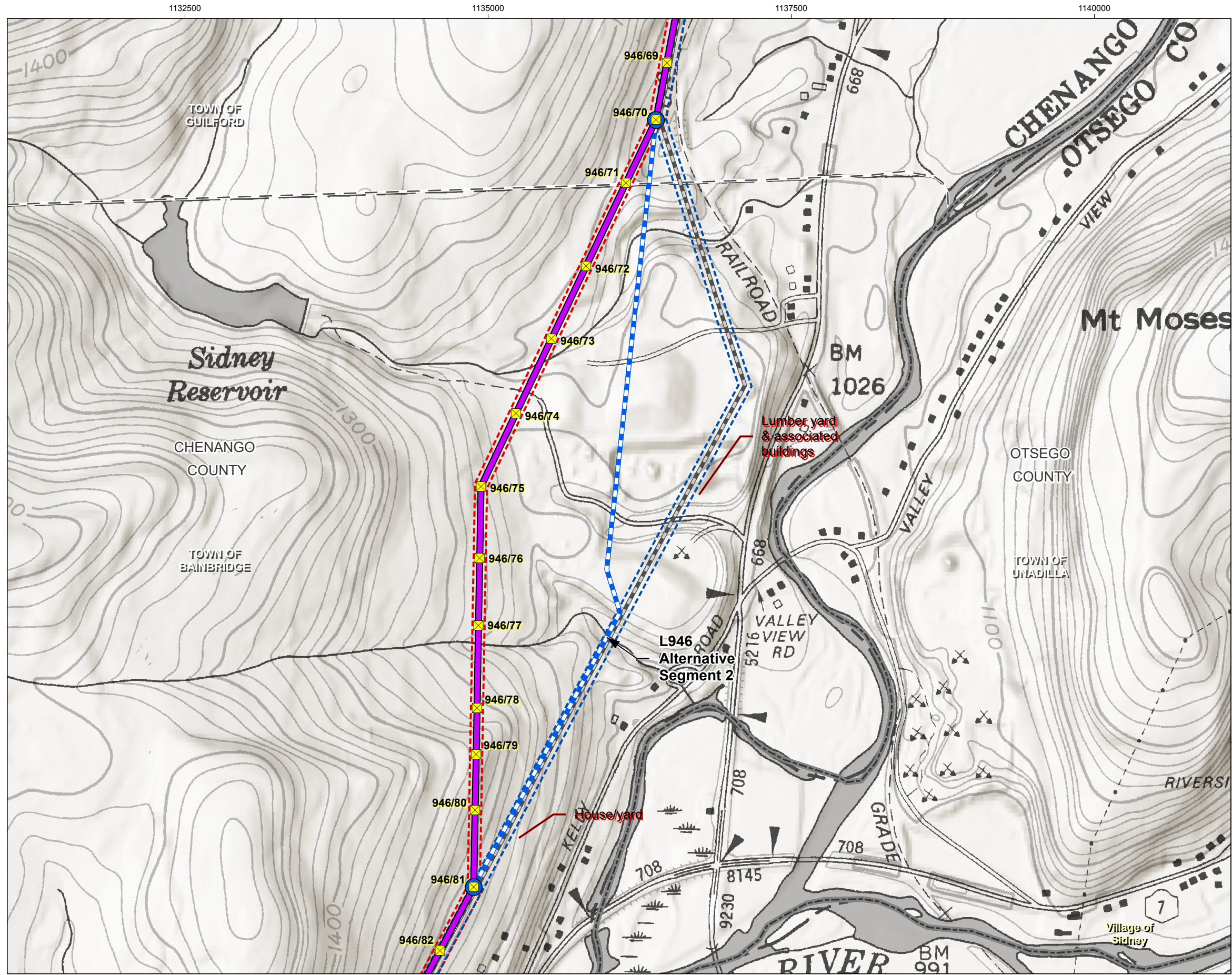
Project Location: Chenango, Delaware, & Otsego Counties, NY  
 Prepared by DG on 2024-06-24  
 TR by AB on 2024-10-14  
 IR by BS on 2024-10-25

Client/Project: Jennison Transmission Solution Project  
 NYSEG CLCPA Program  
 213415070 REVA

Figure No. **3-4**

Title: **Line 946 Alternatives and Proposed Route  
 Mapsheet 2 - Alternative Segment 2 (Aerial)**

U:\213415070\gis\_cad\gis\project11\_permitting\figure\Antiove\11\Exhibit\_3\213415070\_JTS\_Ex-3\_Alternatives.aprx Revised: 2024-11-14 By: abhattaral



**NYSEG**  
An Avangrid company



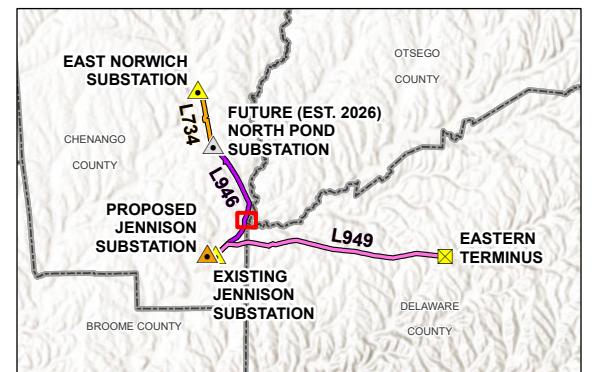
**Jennison Transmission Solution Project**

- Structure, Proposed
- Alternative Segment Endpoint
- Existing Line 946
- Proposed Line 946
- Line 946 Alternative
- Existing Right-of-Way
- Proposed Right-of-Way
- City or Town Boundary
- County Boundary



0 500 1,000 Feet  
(At original document size of 11x17)  
1:10,000

**Notes**  
 1. Coordinate System: NAD 1983 StatePlane New York Central FIPS 3102 Feet  
 2. Data Sources: NYSEG Data, 2024; Esri North American Detailed Streets, 2012; USGS Elevation Contours, The National Map, 2024; NYS OITS GIS Program Office (GPO) Civil Boundaries, 2018  
 3. Background: NYSDOT 1:24,000-scale Raster Quadrangles  
 Esri World Hillshade: [https://services.arcgis.com/arcgis/rest/services/Elevation/World\\_Hillshade/MapServer](https://services.arcgis.com/arcgis/rest/services/Elevation/World_Hillshade/MapServer)



Project Location: Chenango, Delaware, & Otsego Counties, NY  
 Prepared by DG on 2024-06-24  
 TR by AB on 2024-10-14  
 IR by BS on 2024-10-25

Client/Project: Jennison Transmission Solution Project  
 NYSEG CLCPA Program  
 213415070 REVA

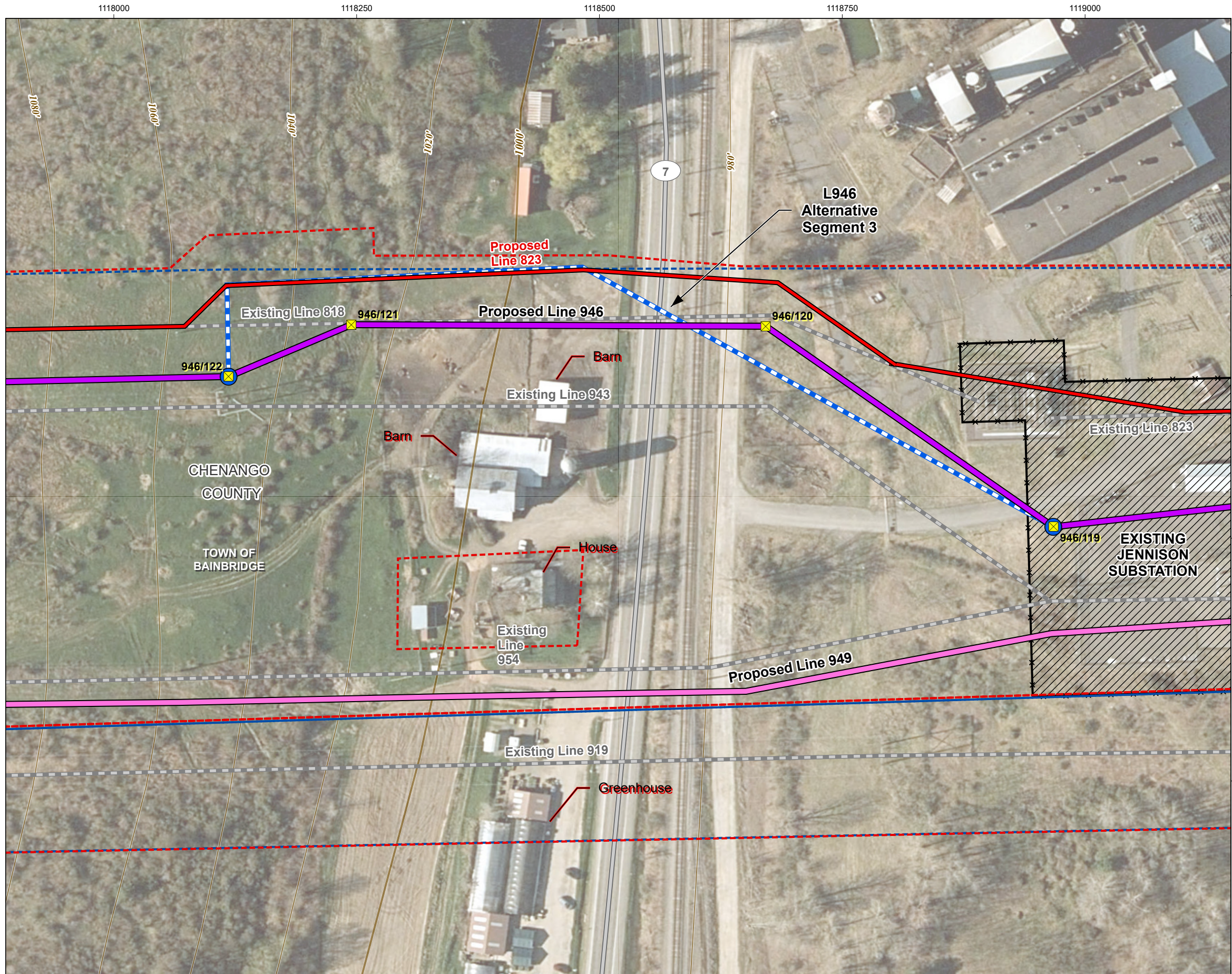
Figure No.

**3-4**

Title

**Line 946 Alternatives and Proposed Route  
 Mapsheet 2 - Alternative Segment 2 (NYSDOT)**

U:\213415070\gis\_cad\gis\project1\permitting\figure\Antiole\Antiole\_VII\Exhibit\_3\213415070\_JTS\_Ex-3\_Altalternatives.aprx Revised: 2024-11-14 By: abhattaral



**Jennison Transmission Solution Project**

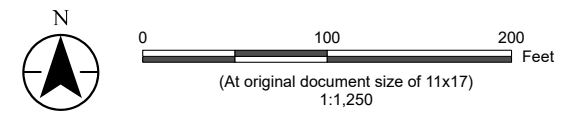
- Structure, Proposed
- Alternative Segment Endpoint
- Proposed Line 946
- Proposed Line 949
- Proposed Jennison Reroute (with Line Number)
- Existing Line (with Line Number)
- Line 946 Alternative
- Substation, Existing
- Existing Right-of-Way
- Proposed Right-of-Way

**Elevation Contour**

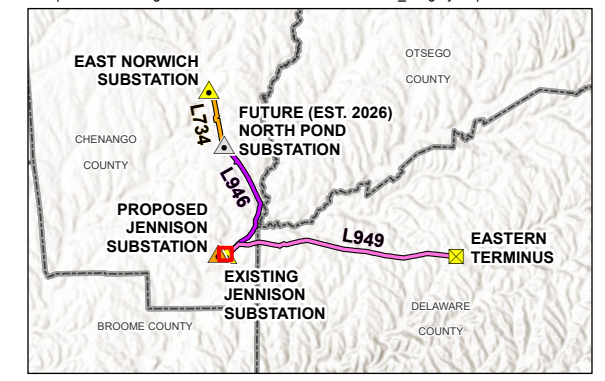
- 20-ft Contour
- 100-ft Contour

**Road or Highway**

- Secondary State or County Highway



- Notes**
1. Coordinate System: NAD 1983 StatePlane New York Central FIPS 3102 Feet
  2. Data Sources: NYSEG Data, 2024; Esri North American Detailed Streets, 2012; USGS Elevation Contours, The National Map, 2024; NYS OITS GIS Program Office (GPO) Civil Boundaries, 2018
  3. Background: Esri World Imagery [https://services.arcgis.com/ArcGIS/rest/services/World\\_Imagery/MapServer](https://services.arcgis.com/ArcGIS/rest/services/World_Imagery/MapServer)



Project Location: Chenango, Delaware, & Otsego Counties, NY  
Prepared by DG on 2024-06-24  
TR by AB on 2024-10-14  
IR by BS on 2024-10-25

Client/Project: Jennison Transmission Solution Project  
NYSEG CLCPA Program  
213415070 REVA

Figure No. **3-4**

Title: **Line 946 Alternatives and Proposed Route  
Mapsheet 3 - Alternative Segment 3 (Aerial)**

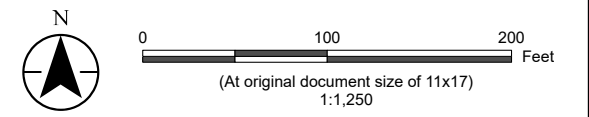
1118000 1118250 1118500 1118750 1119000

831500  
831250  
831000  
830750



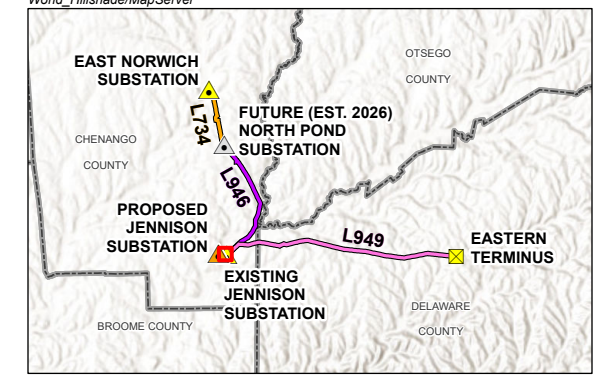
### Jennison Transmission Solution Project

- Structure, Proposed
- Alternative Segment Endpoint
- Proposed Line 946
- Proposed Line 949
- Proposed Jennison Reroute (with Line Number)
- Existing Line (with Line Number)
- Line 946 Alternative
- Substation, Existing
- Existing Right-of-Way
- Proposed Right-of-Way



**Notes**

1. Coordinate System: NAD 1983 StatePlane New York Central FIPS 3102 Feet
2. Data Sources: NYSEG Data, 2024; Esri North American Detailed Streets, 2012; USGS Elevation Contours, The National Map, 2024; NYS OITS GIS Program Office (GPO) Civil Boundaries, 2018
3. Background: NYSDOT 1:24,000-scale Raster Quadrangles  
Esri World Hillshade: [https://services.arcgis.com/arcgis/rest/services/Elevation/World\\_Hillshade/MapServer](https://services.arcgis.com/arcgis/rest/services/Elevation/World_Hillshade/MapServer)



**Project Location**  
Chenango, Delaware, & Otsego Counties, NY

Prepared by DG on 2024-06-24  
TR by AB on 2024-10-14  
IR by BS on 2024-10-25

**Client/Project**  
Jennison Transmission Solution Project  
NYSEG CLCPA Program

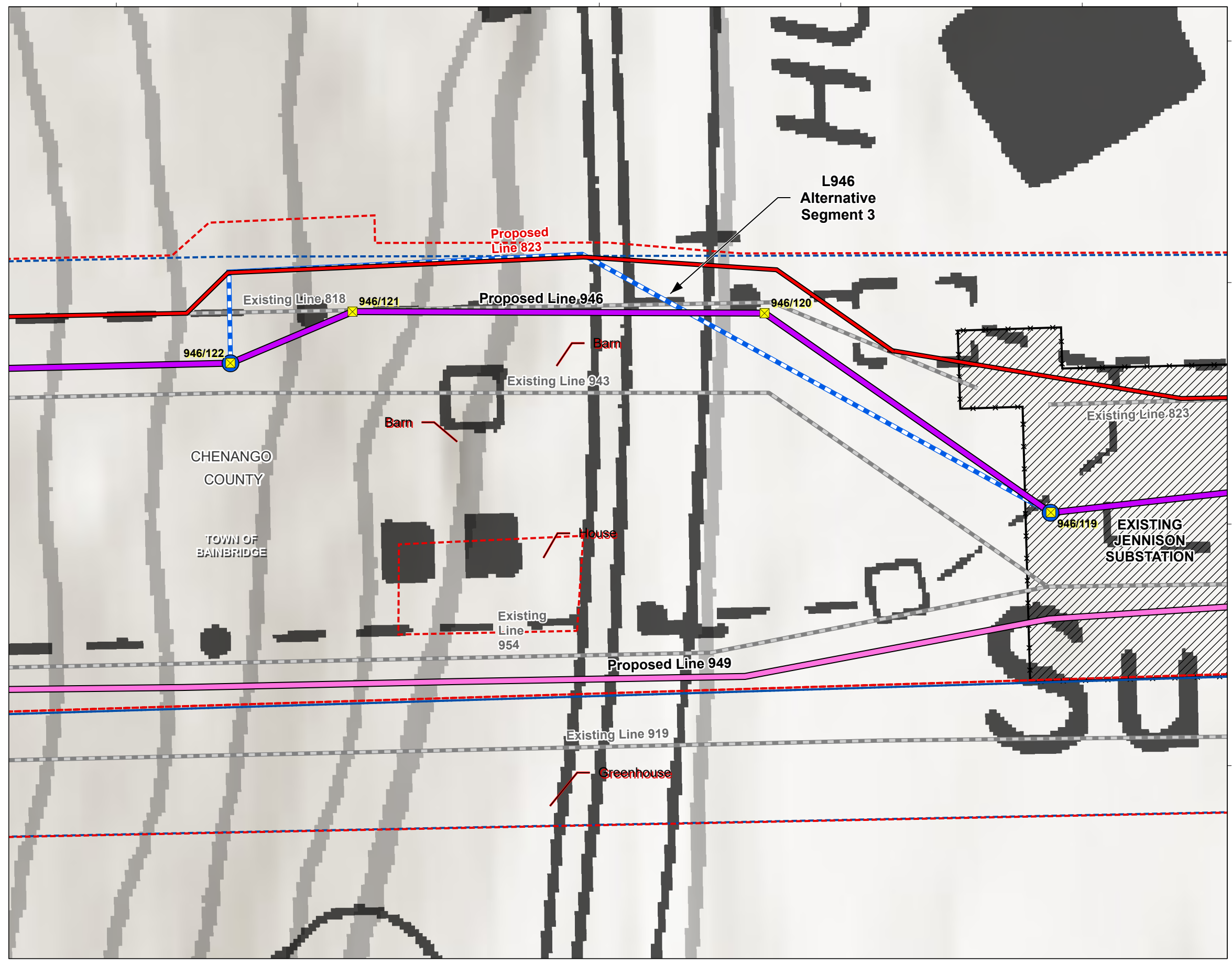
213415070 REVA

Figure No.

**3-4**

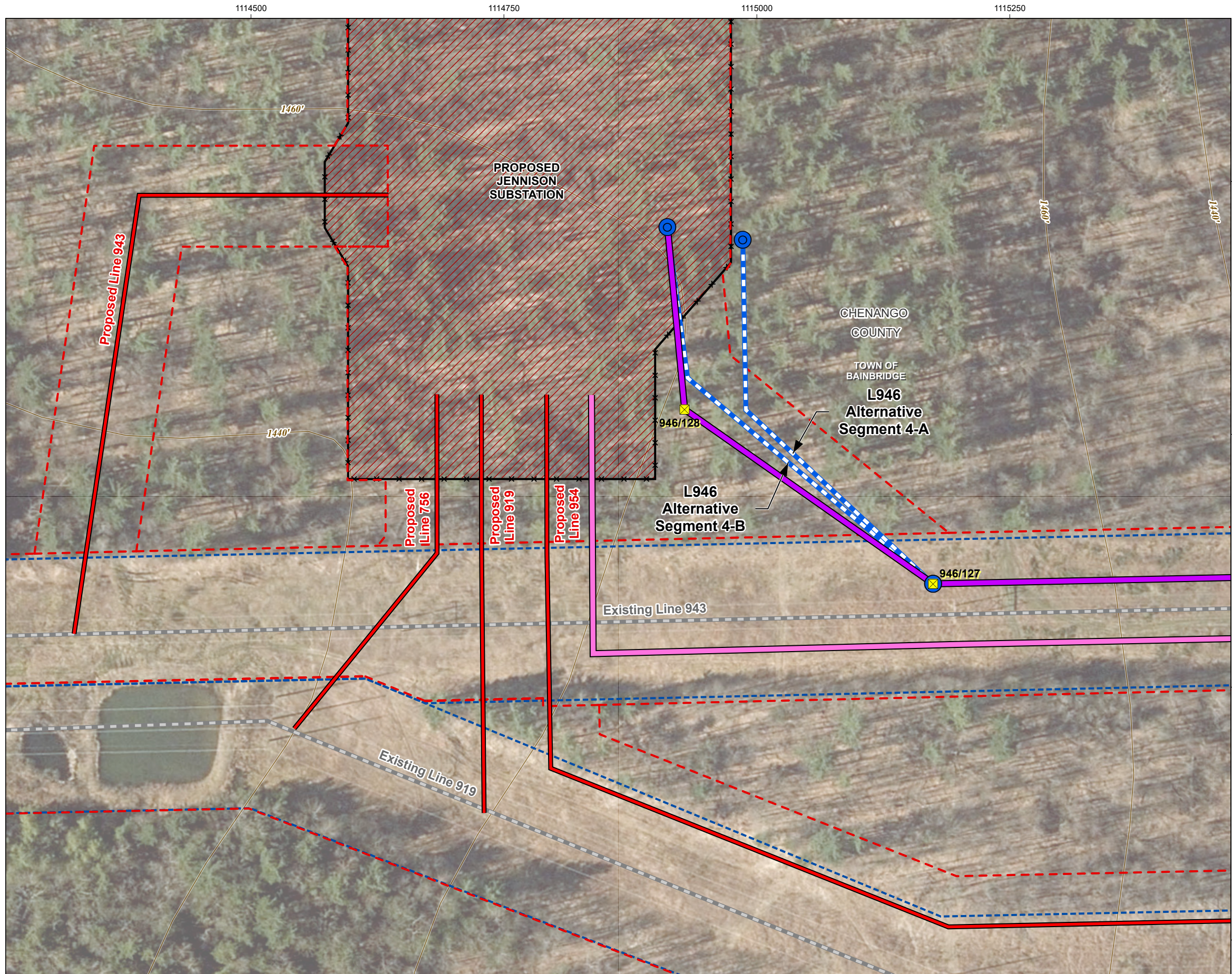
Title

**Line 946 Alternatives and Proposed Route  
Mapsheet 3 - Alternative Segment 3 (NYSDOT)**



U:\213415070\gis\_cad\gis\project1\permitting\figure\Antiole\VII\Exhibit\_3\213415070\_JTS\_Ex-3\_Alternatives.aprx Revised: 2024-11-14 By: abhattarai

U:\213415070\gis\_cad\gis\project1\_permitting\figure\Antioe\VI\Exhibit\_3\213415070\_JTS\_Ex-3\_Alternatives.aprx Revised: 2024-11-14 By: abhattaral



NYSEG  
An Avangrid company



**Jennison Transmission Solution Project**

- Structure, Proposed
- Alternative Segment Endpoint
- Existing Line (with Line Number)
- Proposed Line 946
- Proposed Line 949
- Proposed Jennison Reroute (with Line Number)
- Line 946 Alternative
- Existing Right-of-Way
- Proposed Right-of-Way
- Substation, Proposed

**Elevation Contour**

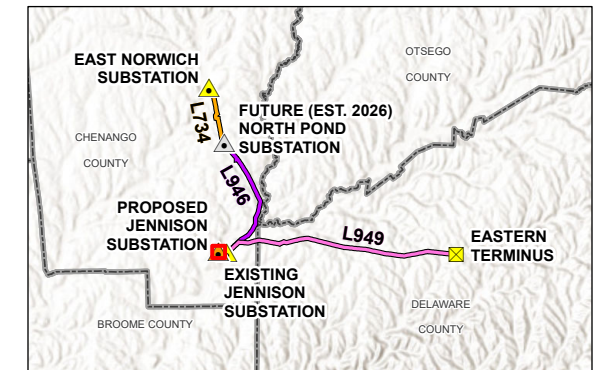
- 20-ft Contour



0 50 100 Feet  
 (At original document size of 11x17)  
 1:1,200

**Notes**

1. Coordinate System: NAD 1983 StatePlane New York Central FIPS 3102 Feet
2. Data Sources: NYSEG Data, 2024; Esri North American Detailed Streets, 2012; USGS Elevation Contours, The National Map, 2024; NYS OITS GIS Program Office (GPO) Civil Boundaries, 2018
3. Background: Esri World Imagery  
[https://services.arcgis.com/ArcGIS/rest/services/World\\_Imagery/MapServer](https://services.arcgis.com/ArcGIS/rest/services/World_Imagery/MapServer)



Project Location  
Chenango, Delaware, & Otsego Counties, NY

Prepared by DG on 2024-06-24  
TR by AB on 2024-10-14  
IR by BS on 2024-10-25

Client/Project  
Jennison Transmission Solution Project  
NYSEG CLCPA Program

213415070 REVA











Figure No.

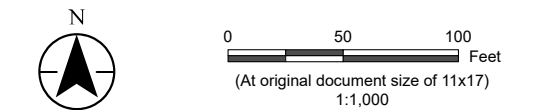
**3-4**

Title

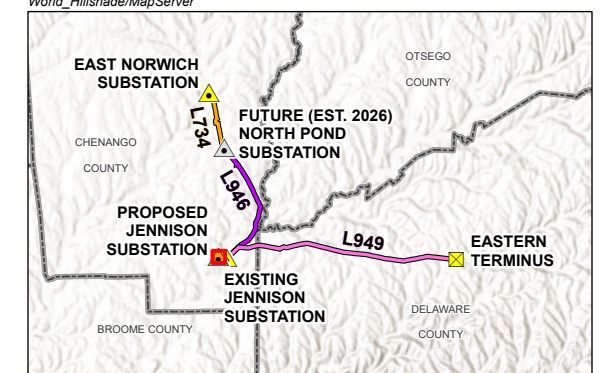
**Line 946 Alternatives and Proposed Route  
Mapsheet 4 - Alternative Segment 4 (Aerial)**

**Jennison Transmission Solution Project**

-  Structure, Proposed
-  Alternative Segment Endpoint
-  Existing Line (with Line Number)
-  Proposed Line 946
-  Proposed Line 949
-  Proposed Jennison Reroute (with Line Number)
-  Line 946 Alternative
-  Existing Right-of-Way
-  Proposed Right-of-Way
-  Substation, Proposed



- Notes**
1. Coordinate System: NAD 1983 StatePlane New York Central FIPS 3102 Feet
  2. Data Sources: NYSEG Data, 2024; Esri North American Detailed Streets, 2012; USGS Elevation Contours, The National Map, 2024; NYS OITS GIS Program Office (GPO) Civil Boundaries, 2018
  3. Background: NYSDOT 1:24,000-scale Raster Quadrangles  
Esri World Hillshade: [https://services.arcgis.com/arcgis/rest/services/Elevation/World\\_Hillshade/MapServer](https://services.arcgis.com/arcgis/rest/services/Elevation/World_Hillshade/MapServer)



**Project Location**  
Chenango, Delaware, & Otsego Counties, NY

Prepared by DG on 2024-06-24  
TR by AB on 2024-10-14  
IR by BS on 2024-10-25

**Client/Project**  
Jennison Transmission Solution Project  
NYSEG CLCPA Program

213415070 REVA

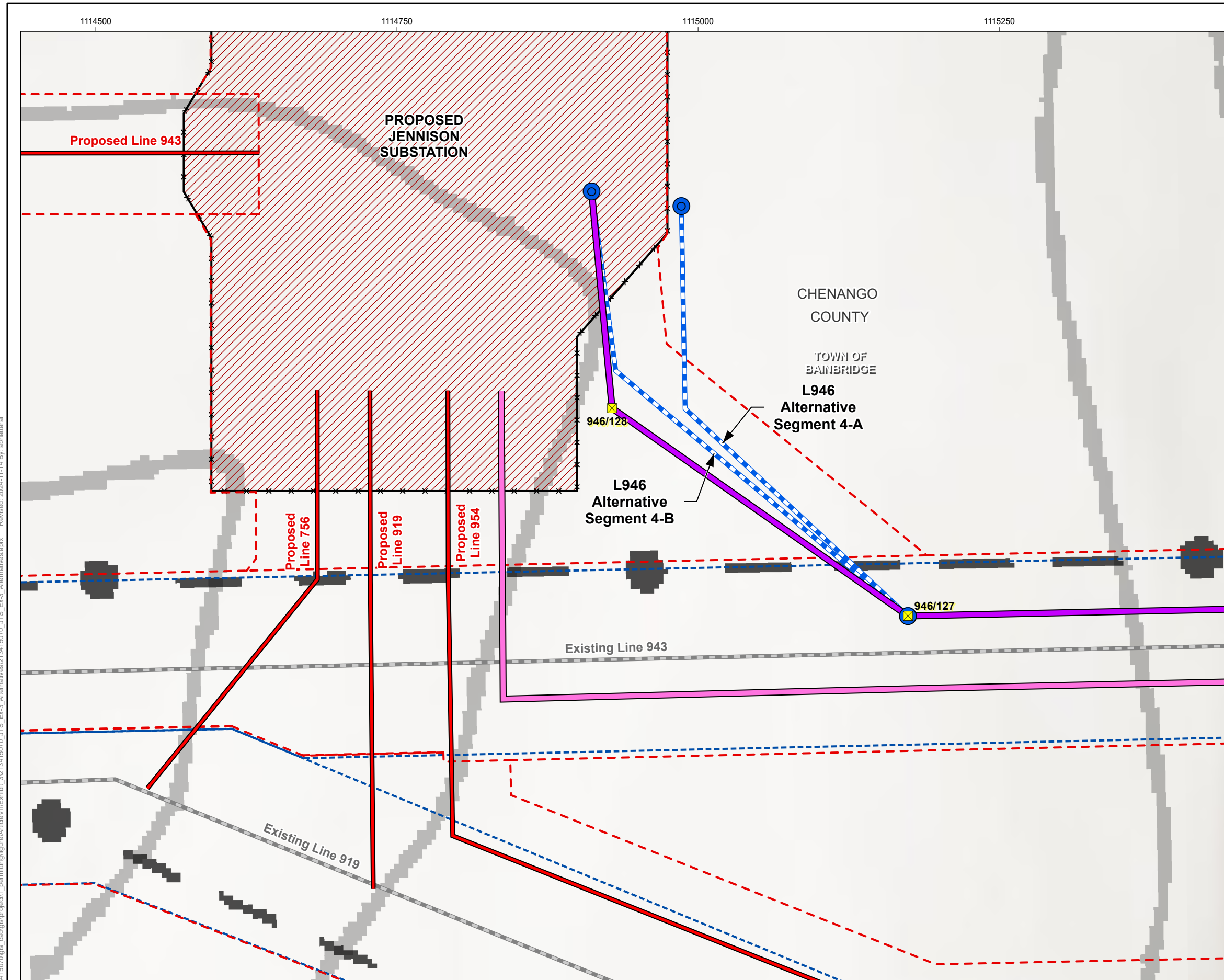
**Figure No.**

**3-4**

**Title**

**Line 946 Alternatives and Proposed Route  
Mapsheet 4 - Alternative Segment 4 (NYSDOT)**

U:\213415070\gis\_cad\gis\project1\permitting\figure\Antioe\VI\Exhibit\_3\213415070\_JTS\_Ex-3\_Alternatives.aprx Revised: 2024-11-14 By: abhattaral





*This page intentionally left blank.*

# **New York State Electric & Gas Corporation**

## **Jennison Transmission Solution Project**

### **Exhibit 3**

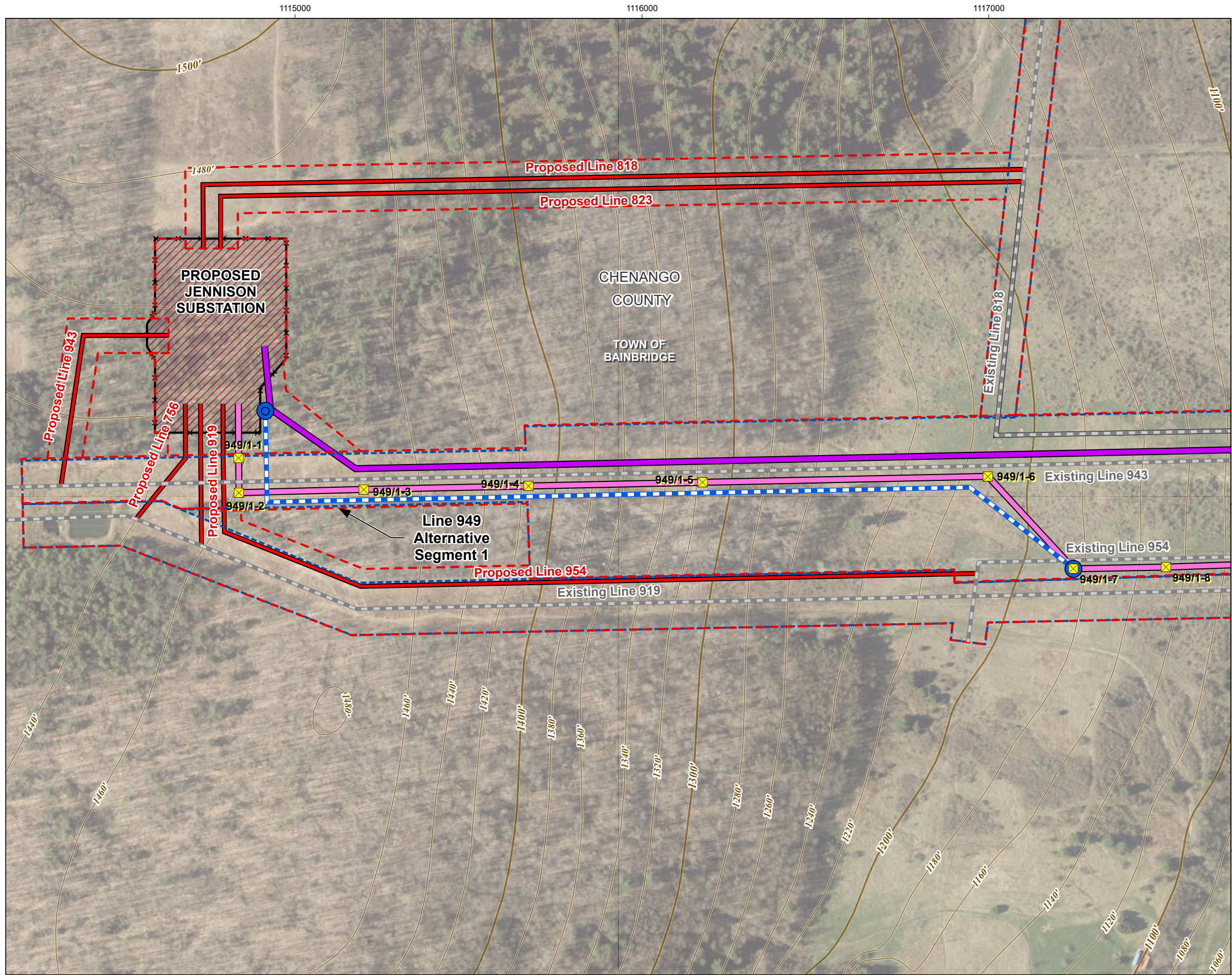
#### **Alternatives**

#### **Figure 3-5**

### **Line 949 Alternatives and Proposed Route**

*This page intentionally left blank.*

U:\213415070\gis\_cad\gis\project1\_permitting\figure\Antioe\Antioe\_VII\Exhibit\_3\213415070\_JTS\_Ex-3\_Alternatives.aprx Revised: 2024-11-14 By: abhattaral



**NYSEG**  
An Avangrid company

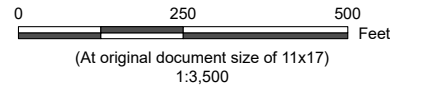


**Jennison Transmission Solution Project**

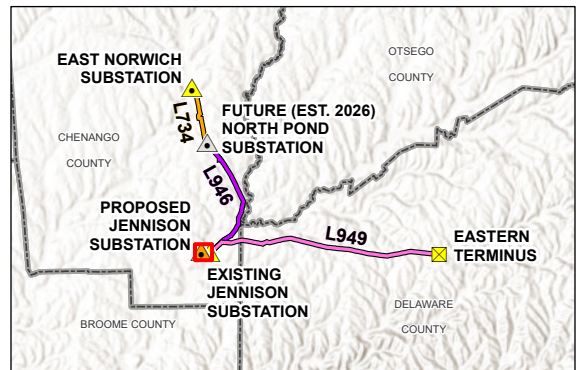
- Structure, Proposed
- Alternative Segment Endpoint
- Existing Line (with Line Number)
- Proposed Line 946
- Proposed Line 949
- Proposed Jennison Reroute (with Line Number)
- Line 949 Alternative
- Existing Right-of-Way
- Proposed Right-of-Way
- Substation, Proposed

**Elevation Contour**

- 20-ft Contour
- 100-ft Contour



- Notes**
1. Coordinate System: NAD 1983 StatePlane New York Central FIPS 3102 Feet
  2. Data Sources: NYSEG Data, 2024; Esri North American Detailed Streets, 2012; USGS Elevation Contours, The National Map, 2024; NYS OITS GIS Program Office (GPO) Civil Boundaries, 2018
  3. Background: Esri World Imagery  
[https://services.arcgis.com/ArcGIS/rest/services/World\\_Imagery/MapServer](https://services.arcgis.com/ArcGIS/rest/services/World_Imagery/MapServer)



Project Location: Chenango, Delaware, & Otsego Counties, NY  
Prepared by DG on 2024-06-24  
TR by AB on 2024-10-14  
IR by BS on 2024-10-25

Client/Project: Jennison Transmission Solution Project  
NYSEG CLCPA Program  
213415070 REVA











Figure No.

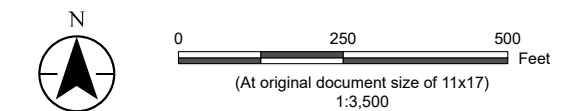
**3-5**

Title

**Line 949 Alternatives and Proposed Route  
Mapsheet 1 - Alternative Segment 1 (Aerial)**

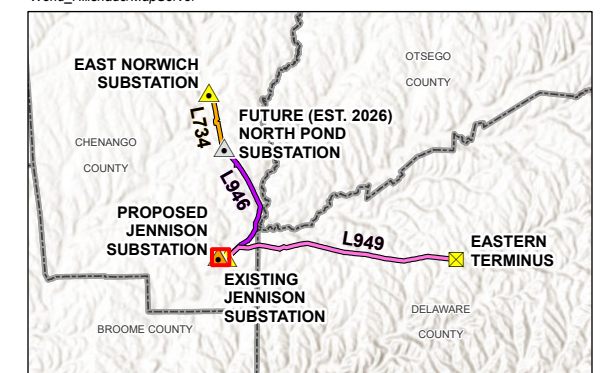
**Jennison Transmission Solution Project**

-  Structure, Proposed
-  Alternative Segment Endpoint
-  Existing Line (with Line Number)
-  Proposed Line 946
-  Proposed Line 949
-  Proposed Jennison Reroute (with Line Number)
-  Line 949 Alternative
-  Existing Right-of-Way
-  Proposed Right-of-Way
-  Substation, Proposed



**Notes**

1. Coordinate System: NAD 1983 StatePlane New York Central FIPS 3102 Feet
2. Data Sources: NYSEG Data, 2024; Esri North American Detailed Streets, 2012; USGS Elevation Contours, The National Map, 2024; NYS OITS GIS Program Office (GPO) Civil Boundaries, 2018
3. Background: NYSDOT 1:24,000-scale Raster Quadrangles  
Esri World Hillshade: [https://services.arcgis.com/arcgis/rest/services/Elevation/World\\_Hillshade/MapServer](https://services.arcgis.com/arcgis/rest/services/Elevation/World_Hillshade/MapServer)



**Project Location**  
Chenango, Delaware, & Otsego Counties, NY

Prepared by DG on 2024-06-24  
TR by AB on 2024-10-14  
IR by BS on 2024-10-25

**Client/Project**  
Jennison Transmission Solution Project  
NYSEG CLCPA Program

213415070 REVA

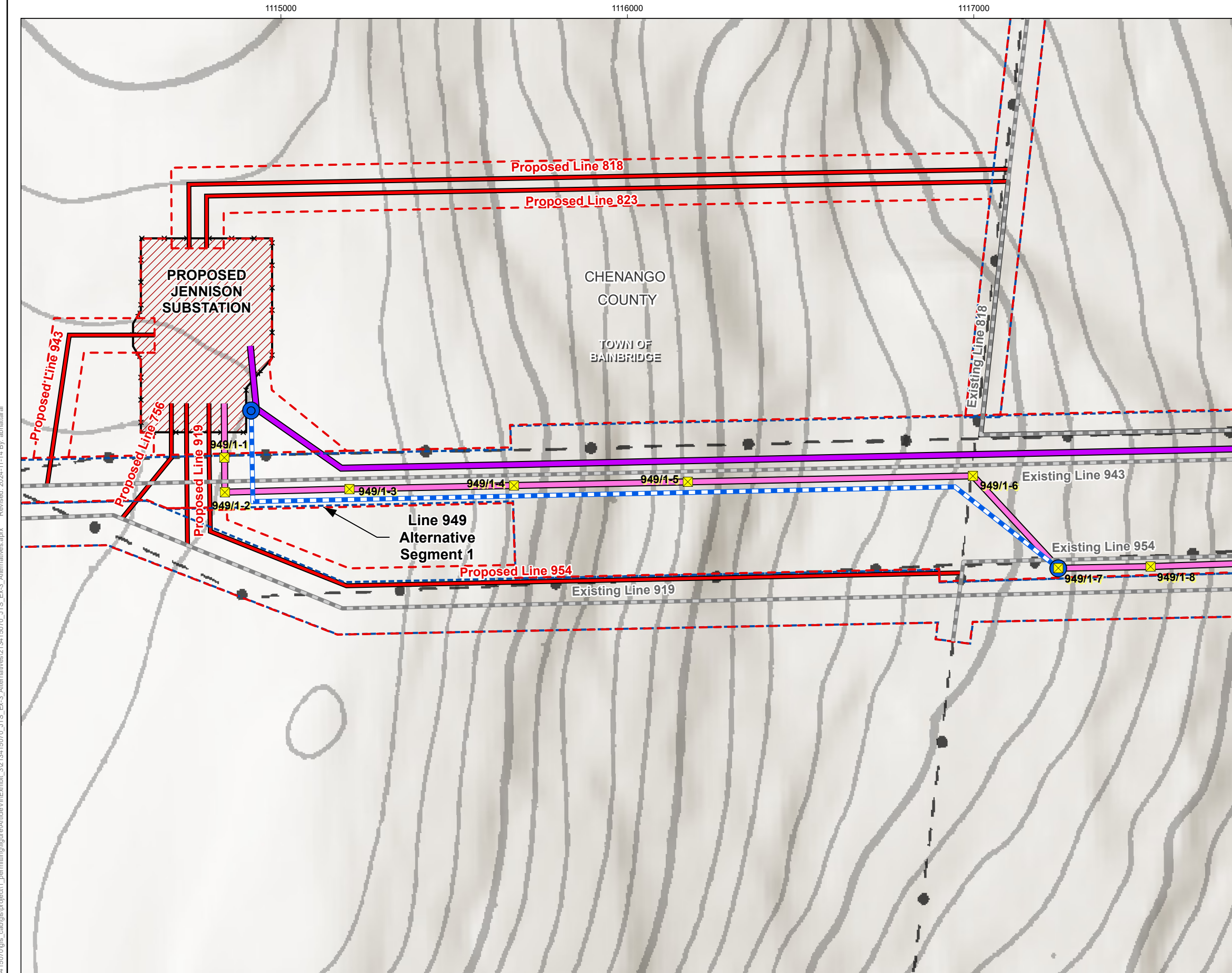
Figure No.

**3-5**

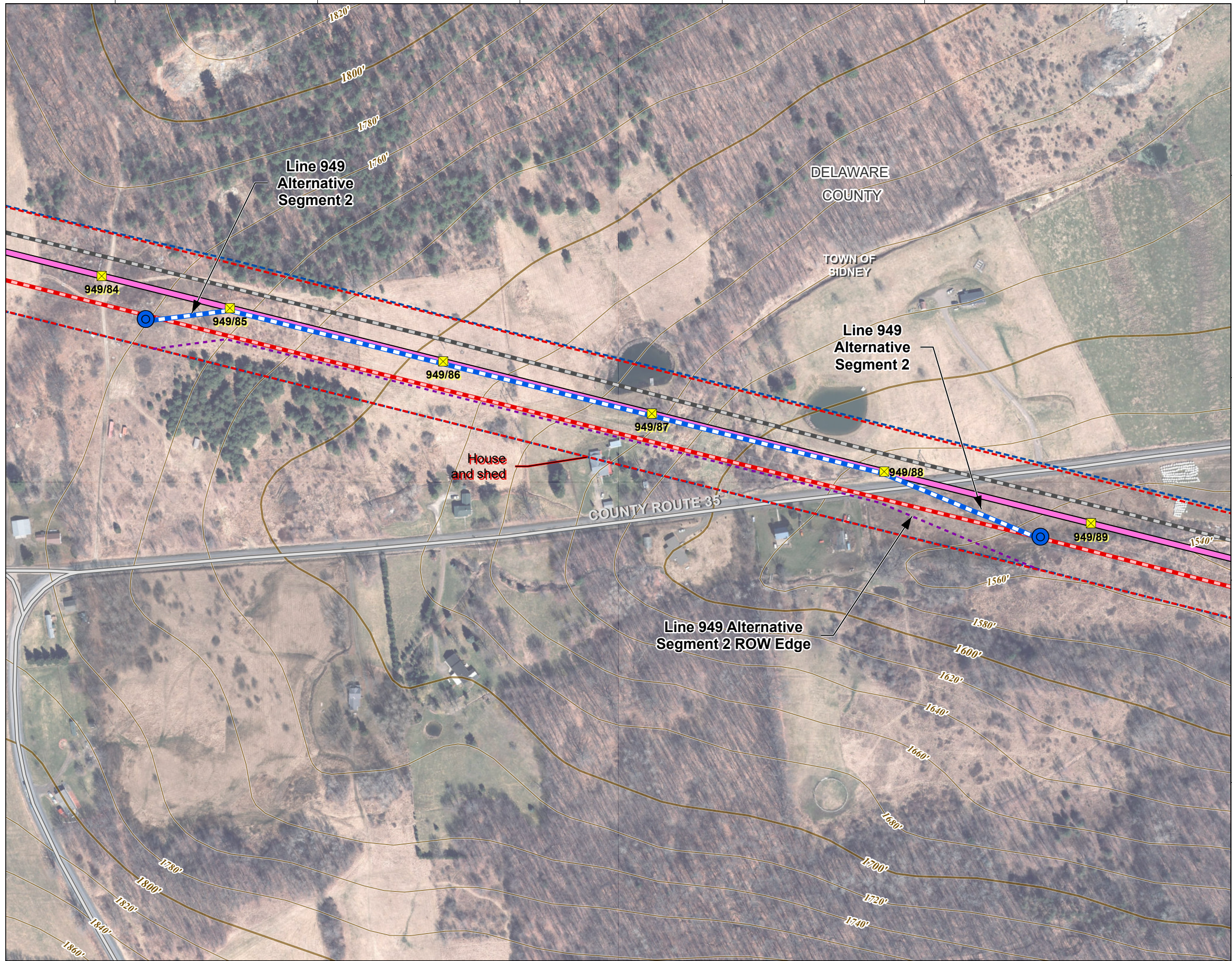
Title

**Line 949 Alternatives and Proposed Route  
Mapsheet 1 - Alternative Segment 1 (NYSDOT)**

U:\213415070\gis\_cad\gis\project1\permitting\figure\Antiole\VI\Exhibit\_3\213415070\_JTS\_Ex-3\_Alternatives.aprx Revised: 2024-11-14 By: abhattaral



1172500 1173000 1173500 1174000 1174500 1175000



**NYSEG**  
An Avangrid company



**Jennison Transmission Solution Project**

- Structure, Proposed
- Alternative Segment Endpoint
- Existing Line 919
- Existing Line 949
- Proposed Line 949

**Alternative Route**

- Line 949 Alternative (Double Circuit with L919)
- Line 949 Alternative Right-of-Way Edge
- Existing Right-of-Way
- Proposed Right-of-Way

**Elevation Contour**

- 20-ft Contour
- 100-ft Contour

**Road or Highway**

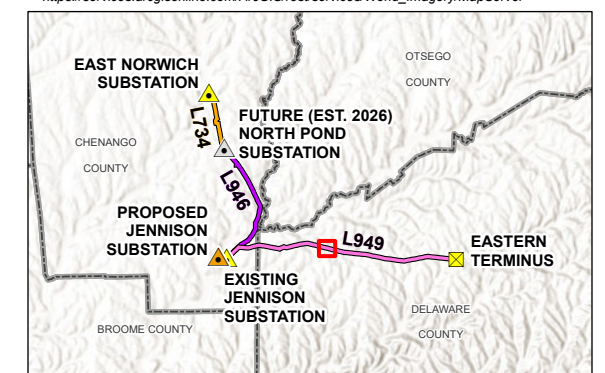
- Local, Neighborhood, Rural or City Street



0 100 200 Feet  
(At original document size of 11x17)  
1:3,000

**Notes**

1. Coordinate System: NAD 1983 StatePlane New York Central FIPS 3102 Feet
2. Data Sources: NYSEG Data, 2024; Esri North American Detailed Streets, 2012; USGS Elevation Contours, The National Map, 2024; NYS OITS GIS Program Office (GPO) Civil Boundaries, 2018
3. Background: Esri World Imagery  
[https://services.arcgis.com/ArcGIS/rest/services/World\\_Imagery/MapServer](https://services.arcgis.com/ArcGIS/rest/services/World_Imagery/MapServer)



**Project Location**  
Chenango, Delaware, & Otsego Counties, NY

Prepared by DG on 2024-06-24  
TR by AB on 2024-10-14  
IR by BS on 2024-10-25

**Client/Project**  
Jennison Transmission Solution Project  
NYSEG CLCPA Program

213415070 REVA

**Figure No.**

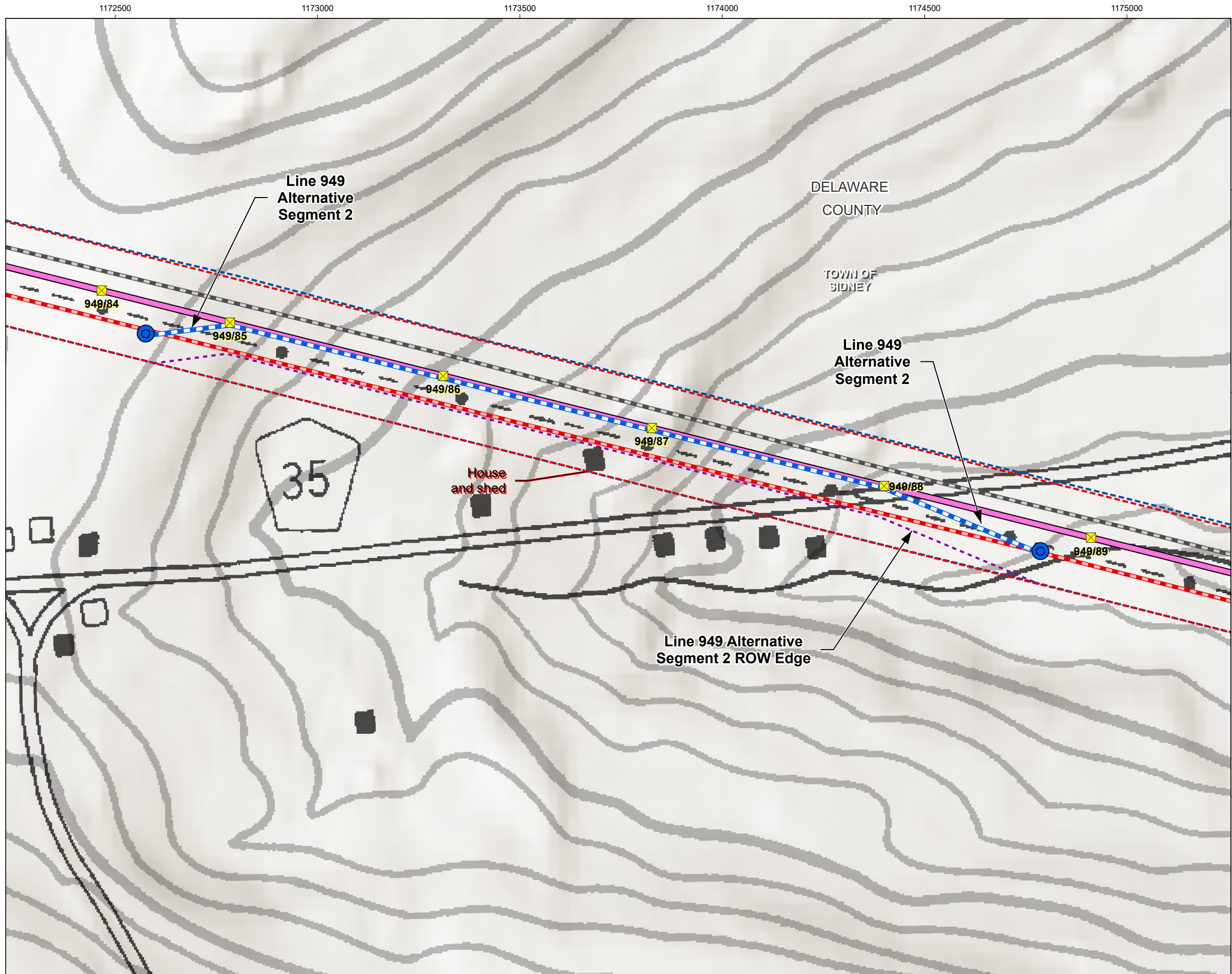
**3-5**

**Title**

**Line 949 Alternatives and Proposed Route  
Mapsheet 2 - Alternative Segment 2 (Aerial)**

U:\213415070\gis\_cad\gis\project1\_permitting\figure\Antiole\11\Exhibit\_3\213415070\_JTS\_Ex-3\_Alternatives.aprx Revised: 2024-11-14 By: abhattaral

U:\213415070\gis\_cad\gis\project1\permitting\figure\Antiole\VI\Exhibit\_3\213415070\_JTS\_Ex-3\_Alternatives.aprx Revised: 2024-11-14 By: abhattaral

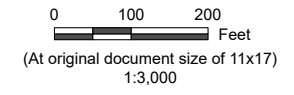


**Jennison Transmission Solution Project**

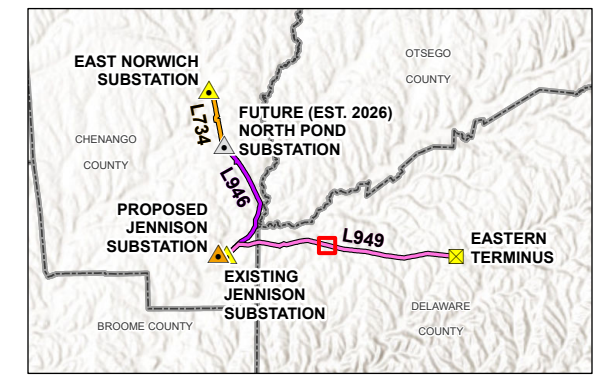
- Structure, Proposed
- Alternative Segment Endpoint
- Existing Line 919
- Existing Line 949
- Proposed Line 949

**Alternative Route**

- Line 949 Alternative (Double Circuit with L919)
- Line 949 Alternative Right-of-Way Edge
- Existing Right-of-Way
- Proposed Right-of-Way



- Notes**
1. Coordinate System: NAD 1983 StatePlane New York Central FIPS 3102 Feet
  2. Data Sources: NYSEG Data, 2024; Esri North American Detailed Streets, 2012; USGS Elevation Contours, The National Map, 2024; NYS OITS GIS Program Office (GPO) Civil Boundaries, 2018
  3. Background: NYSDOT 1:24,000-scale Raster Quadrangles  
Esri World Hillshade: [https://services.arcgis.com/arcgis/rest/services/Elevation/World\\_Hillshade/MapServer](https://services.arcgis.com/arcgis/rest/services/Elevation/World_Hillshade/MapServer)



Project Location: Chenango, Delaware, & Otsego Counties, NY  
Prepared by DG on 2024-06-24  
TR by AB on 2024-10-14  
IR by BS on 2024-10-25

Client/Project: Jennison Transmission Solution Project  
NYSEG CLCPA Program  
213415070 REVA

Figure No.

**3-5**

Title

**Line 949 Alternatives and Proposed Route  
Mapsheet 2 - Alternative Segment 2 (NYSDOT)**

*This page intentionally left blank.*